

DATASHEET
STAKKAbox™ FORTRESS
Preformed access chamber section



CLEAR OPENING:

**445mm X
445mm**

PRODUCT PROFILE:

Stacking Depth: 150mm
Actual Depth: 170mm
Outside Dimensions: 550mm x 550mm
Vertical Loading: The product is designed for use in both footway and roadway installations where it provides access to underground ducting (EN124 Class A15-D400).
Weight: 4.96kg
Product Code: SYFF44-04450445-BK010C000
Product Type: Component Section
Packaging: On request
Notes: N/A



MATERIAL PROFILE:

Chamber Material: High Density Polyethylene (HDPE)
Colour: Black
Working Temperature Range: -40°C to +100°C

TECHNICAL REFERENCES:

Drawing Reference: SYFF44-04450445-BK010C000
Material Properties: Please refer to FORTRESS Specification Datasheet DAT 0500
Test Reports: On request

DAT 0502	
V1.1	09/12/2011

DATASHEET
STAKKAbox™ FORTRESS
Preformed access chamber section



CLEAR OPENING:

**610mm X
445mm**

PRODUCT PROFILE:

Stacking Depth: 150mm
Actual Depth: 170mm
Outside Dimensions: 715mm x 550mm
Vertical Loading: The product is designed for use in both footway and roadway installations where it provides access to underground ducting (EN124 Class A15-D400).
Weight: 5.56kg
Product Code: SYFF44-06100445-BK010C000
Product Type: Component Section
Packaging: On request
Notes: N/A



MATERIAL PROFILE:

Chamber Material: High Density Polyethylene (HDPE)
Colour: Black
Working Temperature Range: -40°C to +100°C

TECHNICAL REFERENCES:

Drawing Reference: SYFF44-06100445-BK010C000
Material Properties: Please refer to FORTRESS Specification Datasheet DAT 0500
Test Reports: On request

DAT 0503	
V1.1	09/12/2011

DATASHEET
STAKKAbox™ FORTRESS
Preformed access chamber section

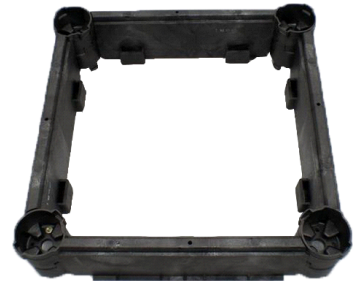


CLEAR OPENING:

**610mm X
610mm**

PRODUCT PROFILE:

Stacking Depth: 150mm
Actual Depth: 170mm
Outside Dimensions: 715mm x 715mm
Vertical Loading: The product is designed for use in both footway and roadway installations where it provides access to underground ducting (EN124 Class A15-D400).
Weight: 6.16kg
Product Code: SYFF44-06100610-BK010C000
Product Type: Component Section
Packaging: On request
Notes: N/A



MATERIAL PROFILE:

Chamber Material: High Density Polyethylene (HDPE)
Colour: Black
Working Temperature Range: -40°C to +100°C

TECHNICAL REFERENCES:

Drawing Reference: SYFF44-06100610-BK010C000
Material Properties: Please refer to FORTRESS Specification Datasheet DAT 0500
Test Reports: On request

DAT 0504	
V1.1	09/12/2011

DATASHEET
STAKKAbox™ FORTRESS
Preformed access chamber section



CLEAR OPENING:

**915mm X
445mm**

No image
currently
available

PRODUCT PROFILE:

Stacking Depth: 150mm
Actual Depth: 170mm
Outside Dimensions: 1020mm x 550mm
Vertical Loading: The product is designed for use in both footway and roadway installations where it provides access to underground ducting (EN124 Class A15-D400).
Weight: 7.04kg
Product Code: SYFF44-09150445-BK010C000
Product Type: Component Section
Packaging: On request
Notes: N/A



MATERIAL PROFILE:

Chamber Material: High Density Polyethylene (HDPE)
Colour: Black
Working Temperature Range: -40°C to +100°C

TECHNICAL REFERENCES:

Drawing Reference: SYFF44-09150445-BK010C000
Material Properties: Please refer to FORTRESS Specification Datasheet DAT 0500
Test Reports: On request

DAT 0505	
V1.1	09/12/2011

DATASHEET
STAKKAbox™ FORTRESS
Preformed access chamber section



CLEAR OPENING:

**915mm X
610mm**

PRODUCT PROFILE:

Stacking Depth: 150mm
Actual Depth: 170mm
Outside Dimensions: 1020mm x 715mm
Vertical Loading: The product is designed for use in both footway and roadway installations where it provides access to underground ducting (EN124 Class A15-D400).
Weight: 7.64kg
Product Code: SYFF44-09150610-BK010C000
Product Type: Component Section
Packaging: On request
Notes: N/A



MATERIAL PROFILE:

Chamber Material: High Density Polyethylene (HDPE)
Colour: Black
Working Temperature Range: -40°C to +100°C

TECHNICAL REFERENCES:

Drawing Reference: SYFF44-09150610-BK010C000
Material Properties: Please refer to FORTRESS Specification Datasheet DAT 0500
Test Reports: On request

DAT 0506	
V1.1	09/12/2011

DATASHEET
STAKKAbox™ FORTRESS
Preformed access chamber section



CLEAR OPENING:

**915mm X
915mm**

PRODUCT PROFILE:

Stacking Depth: 150mm
Actual Depth: 170mm
Outside Dimensions: 1020mm x 1020mm
Vertical Loading: The product is designed for use in both footway and roadway installations where it provides access to underground ducting (EN124 Class A15-D400).
Weight: 9.12kg
Product Code: SYFF44-09150915-BK010C000
Product Type: Component Section
Packaging: On request
Notes: N/A



MATERIAL PROFILE:

Chamber Material: High Density Polyethylene (HDPE)
Colour: Black
Working Temperature Range: -40°C to +100°C

TECHNICAL REFERENCES:

Drawing Reference: SYFF44-09150915-BK010C000
Material Properties: Please refer to FORTRESS Specification Datasheet DAT 0500
Test Reports: On request

DAT 0507	
V1.1	09/12/2011

DATASHEET
STAKKAbox™ FORTRESS
Preformed access chamber section



CLEAR OPENING:

**1220mm X
675mm**

PRODUCT PROFILE:

- Stacking Depth: 150mm
- Actual Depth: 170mm
- Outside Dimensions: 1325mm x 780mm
- Vertical Loading: The product is designed for use in both footway and roadway installations where it provides access to underground ducting (EN124 Class A15-D400).
- Weight: 9.68kg
- Product Code: SYFF44-12200675-BK010C000
- Product Type: Component Section
- Packaging: On request
- Notes: PRODUCT IS BEING DESIGNED - NOT APPROVED

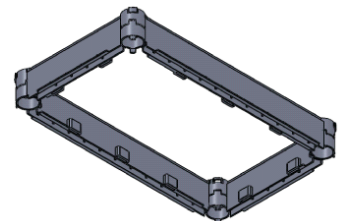
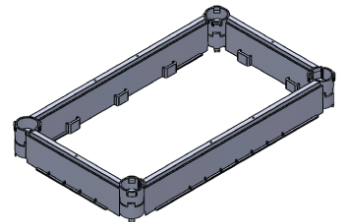
MATERIAL PROFILE:

- Chamber Material: High Density Polyethylene (HDPE)
- Colour: Black
- Working Temperature Range: -40°C to +100°C

TECHNICAL REFERENCES:

- Drawing Reference: SYFF44-12200675-BK010C000
- Material Properties: Please refer to FORTRESS Specification Datasheet DAT 0500
- Test Reports: On request

**PRODUCT
IS UNDER
DEVELOPMENT**



DAT 0508	
1.0	19/12/2011